



New York
21st Century Community Learning Centers
SOARING BEYOND EXPECTATIONS

Round 8A Meet & Greet

July 13, 2023

Agenda

- Welcome
 - **Sign in using the attendance link in the chat**
- Introductions + Overview
- Game Time
- Stretch Break
- Resource Center Updates
- Group Discussion / Q & A
- Wrap-up

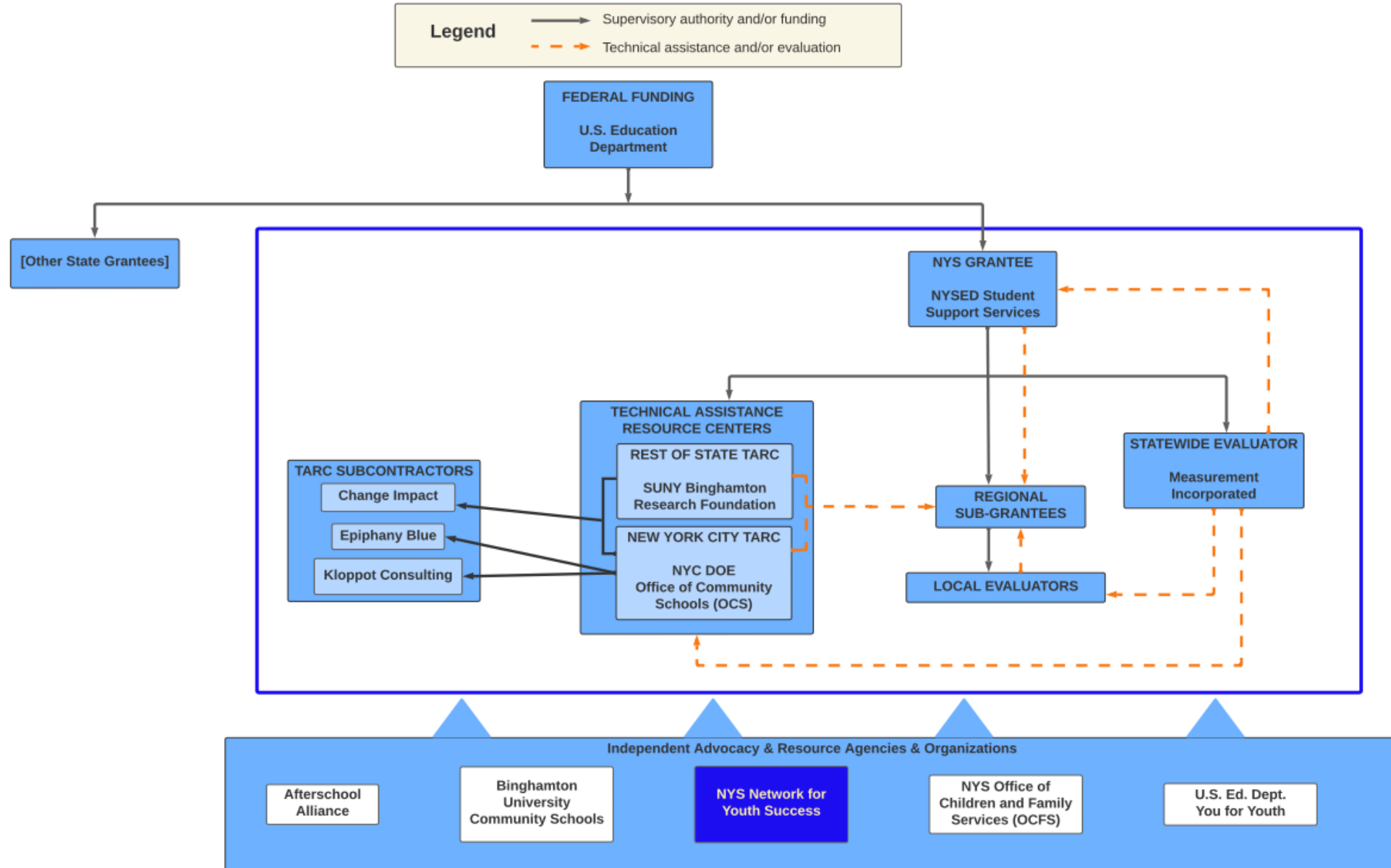
NYSED - Who We Are

- Elizabeth Whipple, SEA Coordinator
- Jolynn Thaickal, Program Support
- Nicholas Canino, Program Support
- Princella Leary, Program Support
- Kyle McHugh, Fiscal Support
- Dana Wagemaker, Fiscal Support
- Darcy Leigh, Fiscal Support

✉ EMSC21STCCLC@nysed.gov

Website: <http://www.p12.nysed.gov/sss/21stCCLC/>

Program Partners



NYSED - Roles & Responsibilities

Program Oversight

- Oversight of Resource Centers and Statewide Evaluation
- Develop and implement program guidelines
- Receive and approve budgets, budget amendments, program modifications
- Determine and support subgrantee training requirements
- Along with the RCs, provide technical assistance

NYSED - Roles & Responsibilities

Fiscal and Administrative Oversight

- **Office of Student Support Services**

- Receives and approves Budgets (FS-10s), Composite Budgets, and MWBE documents
- Receives and approves budget amendments (FS-10-A) and MWBE documents

- **Office of Grants Finance**

(GrantsWEB@nysed.gov)

- Receives and approves Requests for Funds (FS-25s) and Final Expenditure Reports (FS-10-F)

NYSED - Roles & Responsibilities

Fiscal and Administrative Oversight

- **Office of Student Support Services**

- Questions and Inquiries: EMSC21stCCLC@nysed.gov

- Include your project number in the subject line

- Address:

Student Support Services- 21st CCLC BUDGET REVIEW

NY State Education Department

89 Washington Avenue, EB 319M

Albany, New York 12234

Measurement
Incorporated (MI)
Meet the Team

Lily Corrigan | lcorrigan@measinc.com

- Project Co-Lead/Eval Network Facilitator

Jonathan Tunik | jtunik@measinc.com

- Project Co-Lead

Dawn Rettig | drettig@measinc.com

- Communications Specialist/Eval Network Facilitator

Robert Strobel | rstrobel@measinc.com

- Data Management Support

Jody Imbimbo | jody.evaluationsavvy@gmail.com

- Senior Field Researcher

The MI Team works to support Continuous Learning & Improvement for NY 21CCLC stakeholders across the state



▲ Exploring Program Implementation

Investigating issues leaders are confronting

▲ Listening to Learn

Site visits, interviews with leaders, staff, evaluators, families, and participants

▲ Fresh Focus, New Sample

Different study focus each year targeting areas of practice useful to raise up & share in the **Program Progress Brief**

▲ Community of Practice

Convening meetings with Evaluators, exploring professional learning opportunities/extensions

▲ Resource Sharing

Gathering promising practices, design strategies, and tools developed by 21CCLC Evaluators

▲ Responsive Support

TA for Evaluators/Programs, as needed

▲ Formative Findings

Surveying programs' needs for support & Professional Learning, reflecting emerging insights

▲ Actionable Recommendations

Synthesizing findings from multiple sources & system levels into the **Annual Evaluation Report**

▲ Up-to-date Guidance

Integrating findings into State's continuous improvement planning & policy-making

Additional Evaluation of State-level Stakeholders

Evaluation of **State-level Objectives**

- ▲ **Program-level SEL Initiatives and Statewide Outcomes**
Preliminary pilot study to explore sub-grantees' efforts to support Social-emotional learning
- ▲ **Statewide Impact Analyses**
Quasi-experimental design to assess NYS programs' collective contribution to student outcomes in academics and behavior
- ▲ **Fresh Focus, New Sample**
Different study focus each year targeting areas of practice useful to raise up & share in the **Program Progress Brief**

Evaluation of **TARCs**

- ▲ **Focus groups with TARC staff**
Exploring TA strategies, successes and challenges through RC staff perspectives
- ▲ **Conference, workshop, and end of year Staff surveys**
Quality and value of trainings, TA and other supports through sub-grantees' perspectives
- ▲ **Conference, workshop and SMV observations**
Quality and appropriateness of trainings and TA from MI's perspective

Technical Assistance on **Data Management**

- ▲ **Identify Sub-grantees' and Local Evaluators' Needs**
Monitor users' questions and needs in use of EZReports and other data management
- ▲ **Support effectiveness of data systems**
Help develop EZReports customizations
Support Data Specialist and Data Monitor roles
Support State teams on strategies for monitoring data quality
Observe EZReports training sessions
- ▲ **Support program-level data collection**
Oversee teacher survey process

Contact the
Evaluator
Network
Facilitators

For resources, information and to be included on the Network email distribution

- **Lily Corrigan** | lcorrigan@measinc.com
- **Dawn Rettig** | drettig@measinc.com

21st CCLC Regions & Resource Centers


- **New York City** – programs located within the five boroughs
- **Rest of State** – programs located throughout the rest of the state (includes Long Island)

TARCS - Who We Are

Rest of State:

- Casey Pulz, Director
- Rachel Parsons, Program Specialist
- Bernard Fleming, Program Specialist
- Jordi Naczi, Program Specialist
 - Data Specialist as of August!
- Paul Macharia, Outgoing Data Specialist

 ny21cclc@binghamton.edu

 607-777-9240

Technical
Assistance
Resource Centers
(TARCS) - Who
We Are

New York City:

- Ramy Fakhr, Director
- Kizzy Smallwood, Program Specialist
- Cruz Garcia, Program Specialist
- Dor B. Dourandi, Data Specialist

 TARCNYC@schools.nyc.gov

TARCS - Roles & Responsibilities

- Conduct **Welcome visits** to new subgrantees in Year 1
- Conduct **Site Monitoring Visits (SMV)** on behalf of NYSED
- Review proposed **program modifications** before submission to NYSED
(Modifications are not accepted until contracts are registered)

TARCS - Roles & Responsibilities

- **Provide technical assistance** (EZ Reports, programmatic challenges, administrative questions, etc.)
- **Offer professional development opportunities** (live webinars, twice-yearly conferences, self-paced courses through Change Up Learning platform - contact the RC for link to sign up)
- **Maintain distribution list, website, monthly newsletter, and program manual**
- **Website:** <https://www.nys21cclc.org/>

GAME TIME!

Name That Movie



Coco



Breakfast Club



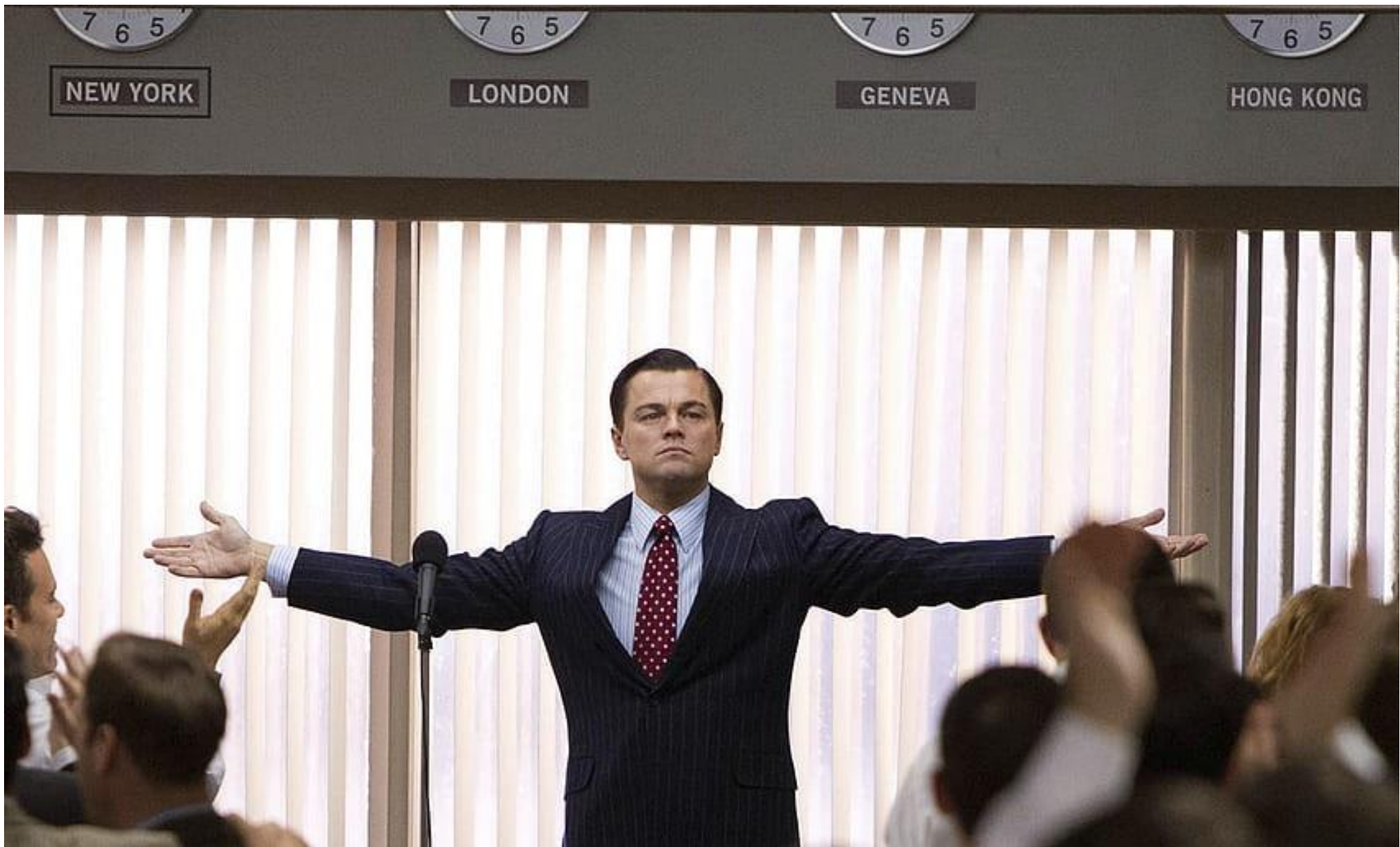
Black Panther



Social Network

Shawshank Redemption





Wolf of Wall St

STRETCH BREAK!



Resource Center Updates

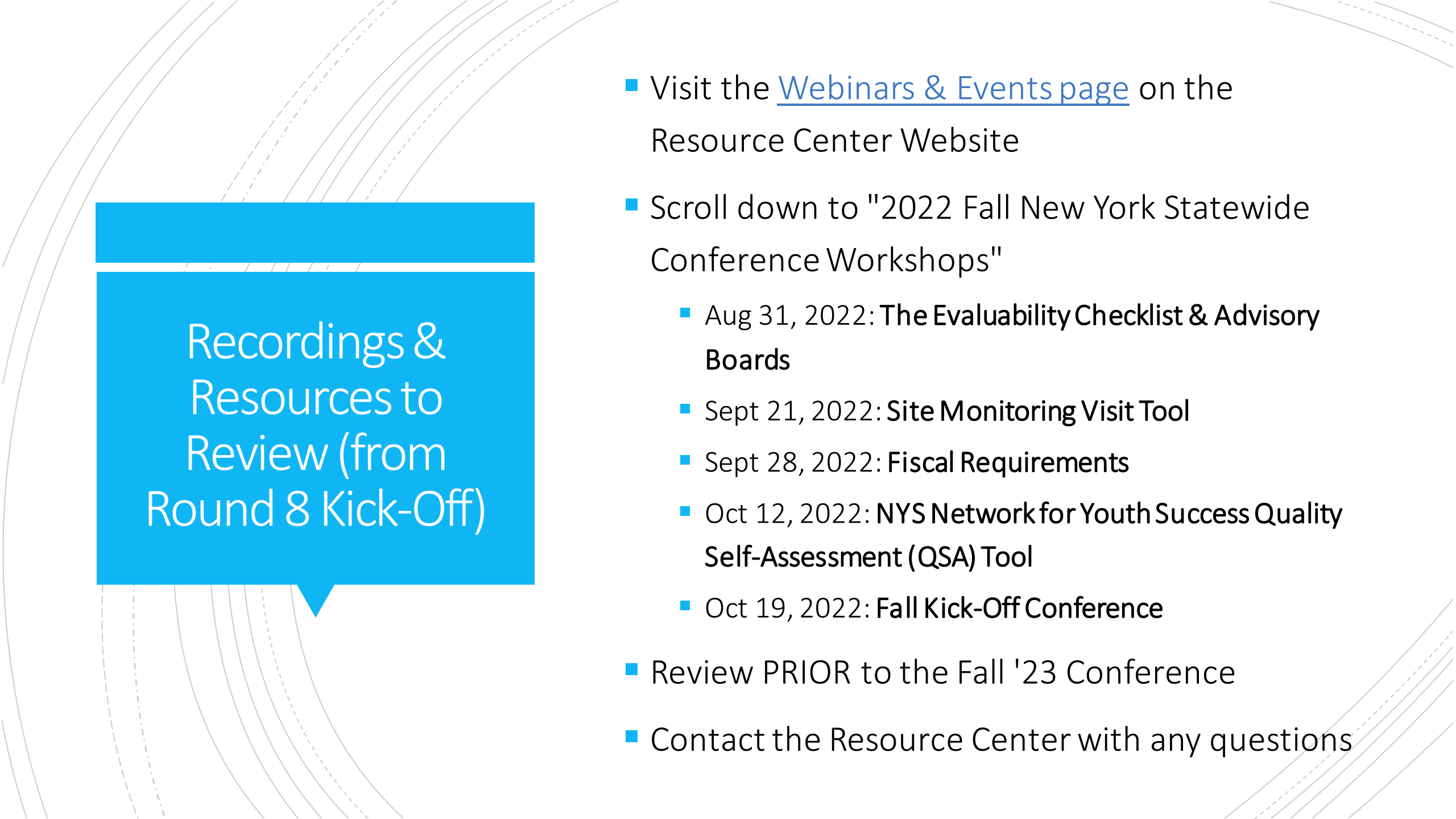


Resources

- Welcome visits
- Review [RFP](#) & Proposals
- Review [SMV Tool](#)
- [21st CCLC Program Manual for Program Directors](#)
- [21st CCLC Timeline](#)
- First Advisory Board meeting to be held in **Aug/Sept**
 - [Advisory Board memo](#)
- Resources
 - NYSED website: <https://www.p12.nysed.gov/sss/21stCCLC/>
 - Resource Center website: <https://www.nys21cclc.org/>
 - You for Youth: <https://y4y.ed.gov/>
 - Network for Youth Success: <https://networkforyouthsuccess.org/>

Evaluability Checklist

- Evaluability is a **3 Stage Collaborative Process** that can be completed within the first 4-5 months. Co-signed completed Evaluability Checklists are submitted to NYSED by December 31st.
 - ✓ Stage 1: Collaborative Planning
 - ✓ Stage 2: First Site Visit/Readiness Review
 - ✓ Stage 3: Formative Findings Report & Review
- Purpose: **Setting up for Success & launching the Continuous Improvement partnership.**
 - ✓ Program Director and Local Evaluator check that the program, as designed and installed, aligns with NYSED guidance.
 - ✓ Data collection activities are practical and feasible.
 - ✓ Participatory evaluation approach is used, and engagement and communication protocols are understood and agreed to.



Recordings &
Resources to
Review (from
Round 8 Kick-Off)

- Visit the [Webinars & Events page](#) on the Resource Center Website
- Scroll down to "2022 Fall New York Statewide Conference Workshops"
 - Aug 31, 2022: **The Evaluability Checklist & Advisory Boards**
 - Sept 21, 2022: **Site Monitoring Visit Tool**
 - Sept 28, 2022: **Fiscal Requirements**
 - Oct 12, 2022: **NYS Network for Youth Success Quality Self-Assessment (QSA) Tool**
 - Oct 19, 2022: **Fall Kick-Off Conference**
- Review PRIOR to the Fall '23 Conference
- Contact the Resource Center with any questions

REQUIRED Fall '23 Conference

- Conference attendance is **required for all Program Directors**
- Fiscal Coordinators, Evaluators, Data Managers, Site Coordinators, and other program staff are able and encouraged to attend
- **Rest of State:** Sept 28 - Sept 29, 2023 in Binghamton, NY
 - 9/28: OPTIONAL Connection Reception 5:00-7:00pm
 - 9/29: REQUIRED Fall Conference 8:00am-4:00pm
 - Agenda and session details are forthcoming
 - For more information & to register, visit the [Webinars & Events page of the RC website](#)
- **NYC: Week of October 23rd** – Date & registration forthcoming

Contacting NYSED & the TARCs

- Stay in touch:
 - NYSED: EMSC21STCCLC@nysed.gov
 - RoS: ny21cclc@binghamton.edu
 - NYC: TARCNYC@schools.nyc.gov
- Include 4-digit Project ID in the subject line
- Project ID:
 - 0187 – 24 – 8XXX
 - 21st CCLC program
 - Program year (ex: '23-'24), changes each year
 - 4-digit Project ID
- [Find your 4-digit Project ID here](#)

Staff & Contacts

- Provide updated contact information to Resource Centers
 - Program Managers
 - Fiscal Coordinators
 - Site Coordinators
 - Data Managers
 - Education Liaisons
 - Local/Independent Evaluators
- Additional resources re: roles/responsibilities
 - [Guidance for the Program Data Manager Role](#)
 - [21st CCLC Program Manual for Directors](#)
 - ["Maximizing the Education Liaison Role in 21st CCLC Programs"](#)

EZReports Trainings

***REQUIRED* Upcoming Virtual EZReports Trainings**

- **Grantee-Level Training:** Wednesday, July 26, 10:30am-12:30pm
- **Site-Level Training:** Wednesday, August 2, 10:30am-12:30pm
- You will receive registration information via email
- Additional training opportunities to be announced
- Program Managers will receive EZReports login info from the RC
- Use the EZReports Support feature for support videos and to access the user guide

A blue speech bubble with a white outline and a black shadow, containing the text "Group Discussion / Q&A". The background features a pattern of thin, light gray concentric circles and dashed lines.

Group Discussion / Q&A



Thank You!

Contacts:

*Include 4-digit Project ID in subject line

- **NYSED:** EMSC21STCCLC@nysed.gov
- **Rest of State Resource Center:**
 - ny21cclc@binghamton.edu
 - 607-777-9240
 - [Technical Assistance Request Form](#)
- **NYC Resource Center:**
 - TARCNYC@schools.nyc.gov
 - [Technical Assistance Request Form](#)